

**WAHL®**  
PROFESSIONAL



**2025**

**PRO**   
**COLLECTION**



**SALES, SERVICE, REPAIRS AND SHARPENING**

Suppliers to: Veterinary Sciences, Hospitals, Doggie Parlours,  
Equestrian Groomers, Barbers, Beauty Salon And Allied Companies

Stockist of: Surgical and Non-Surgical Scissors, Blades, Clippers,  
Instruments & Accessories



**FAHMARKETING@TELKOMSA.NET**

**INFO@FAHMARKETING.CO.ZA**

**+27 (0) 11 855 0433**

**+27 (0)72 359 4479**

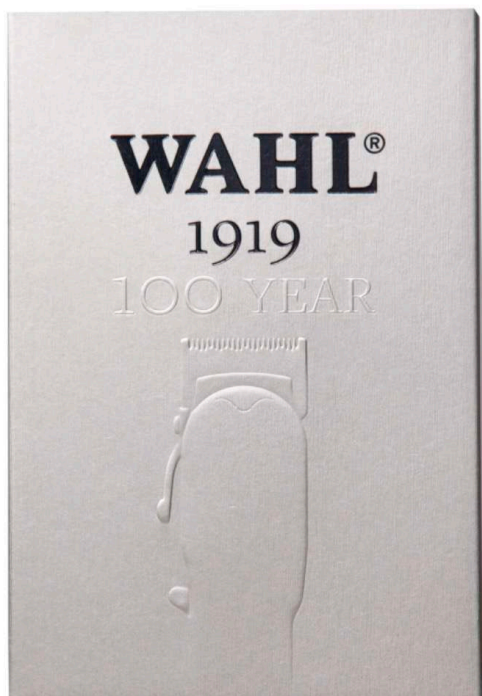
**WWW.FAHMARKETING.CO.ZA**



# 100 Year Limited Edition Clipper



Introducing the limited edition 100 Year Anniversary Clipper! This clipper comes with an all-metal housing with a heavy-duty, high impact solid vintage look and feel. 70 minutes cordless run time and operate on the cord when needed. Celebrating a century of the world's finest grooming products, since the invention of the electric hair clipper by Leo Wahl in 1919.



- Type:** Professional Cordless Clipper
- Run time:** 70 min (continuous operation on mains)
- Charge time:** 70 min
- Motor:** Powerful DC Motor 6400-6900 RPM
- Blades:** 1006-401 Taper Blade
- Cutting length:** 1 – 3.5mm
- Cutting width:** 40mm
- Cable length:** 2.3m (plug-in transformer)
- Includes:** Blade guard, blade oil, clean brush, a transformer, barber's comb, polishing cloth



Part Number	Packaging unit	Case Pack
WA81919	4 pcs	6



# Cordless Senior Metal Edition



The ultimate precision clipper, the Wahl 5 Star Cordless Senior, now available in a metal edition. Complete with the cordless clipper charge stand. Still your go to clipper for traditional tapering, precision fades, and clipper over comb - but now with the durable and stylish metal housing. The 5 Star Cordless Senior is an elite tool fit for elite barbers.



- Type:** Professional Cordless Clipper
- Run time:** 80 min (continuous operation on mains)
- Charge time:** 120 min
- Motor:** Powerful DC Motor 7000 RPM
- Blades:** 2191-116 Fade Blade
- Cutting length:** 1 – 3.5mm
- Cutting width:** 40mm
- Cable length:** 2.3m (plug-in transformer)
- Includes:** Blade guard, blade oil, clean brush, a transformer, barber's comb & 3 premium guide combs



Part Number	Packaging unit	Case Pack
3000116	10 pcs	6



# GOLD MAGIC CLIP



At the heart of the 5 Star Gold Cordless Magic Clip® is a more powerful motor that delivers continuous hair-cutting horsepower through even the thickest of hair types. The 5 Star Gold Cordless Magic Clip® features American-made high-carbon steel blades with titanium and DLC coatings that are ultra-strong, rust resistant, and keep their cool. With Wahl's Patented Stagger-Tooth™ blade, lines of demarcation are easily erased to achieve a flawless fade every time. The 5 Star Gold Cordless Magic Clip® will go strong for 100+ minutes, giving you plenty of time to achieve your vision with each and every hairstyle. Thanks to the 5 Star Gold Cordless Magic Clip's® Smart LED, you'll always know your charge level. It comes with a matching gold and black weighted charge stand and eight premium, secure-fitting cutting guides with metal clips



- Type:** Professional Cordless Clipper
- Run time:** 100 min (continuous operation on mains)
- Charge time:** 60 min
- Motor:** Powerful DC Motor 6500 RPM
- Blades:** 2 Hole Stagger Tooth Blade
- Cutting length:** 0.5mm - 1.2mm
- Cutting width:** 40mm
- Cable length:** 2.3m (plug-in transformer)
- Includes:** Blade guard, blade oil, clean brush, a charge stand, barber's comb & 8 premium guide combs



Part Number	Packaging unit	Case Pack
08148-716	15 pcs	6



# CORDLESS SENIOR



Introducing the 5 Star Cordless Senior. The powerful rotary motor generates a higher blade speed and torque for more cutting power. The adjustable thin profile blade allows for precision fading and closer cutting. The aluminium metal bottom housing provides a weighted feel for precision and control.



- Type:** Professional Cordless Clipper
- Run time:** 70 min (continuous operation on mains)
- Charge time:** 120 min
- Motor:** Powerful DC Motor ~6500 rpm
- Blades:** 2191-116 Fade Blade
- Cutting length:** 1 – 3.5mm
- Cutting width:** 40mm
- Product weight:** 362g (without cable)
- Cable length:** 2.3m (plug-in transformer)
- Includes:** 3 premium guide combs, blade guard, blade oil, clean brush, a transformer, barber's comb.



Part Number	Packaging unit	Case Pack
8504-016	8 pcs	6



# CORDLESS LEGEND



The 5 Star Cordless Legend Clipper is a must have tool for the busy and creative Barber and Hairstylist. The deeper, longer teeth on the wedge blade perfectly feed thick and textured hair for smooth bulk removal. The extended taper lever provides a wide range of cutting lengths from 0.7mm to 1.7mm. This premium tool feels ergonomically weighted and balanced in the hand to reduce fatigue. It is fitted with a high durability metal taper lever and switch to ensure this tool will stand the test of time. This clipper is perfect for soft line fading and seamless blending .



- Type:** Professional Cordless Clipper
- Run time:** 100 min (continuous operation on mains)
- Charge time:** 60 min
- Motor:** Powerful DC Motor ~6500 rpm
- Blades:** 2228-400 Deep tooth Wedge Blades
- Cutting length:** 1 – 3.5mm
- Cutting width:** 40mm
- Product weight:** 226g (without cable)
- Cable length:** 2.3m (plug-in transformer)
- Includes:** 8 premium guide combs, blade guard, blade oil, clean brush, a transformer, barber's comb.



Part Number	Packaging unit	Case Pack
8594-016	14 pcs	6



# CORDLESS MAGIC CLIP



Introducing the 5 Star Cordless Magic Clip. Featuring the unique Stagger Tooth blade with crunch technology, which feeds hair faster and visibly improves blending. The blade adjusts to zero overlap for skin tight fading.



- Type:** Professional Cordless Clipper
- Run time:** 90 min (continuous operation on mains)
- Charge time:** 120 min
- Motor:** Powerful DC Motor ~5500 rpm
- Blades:** 2161-400 Stagger Tooth Blade
- Cutting length:** 1 – 3.5mm
- Cutting width:** 40mm
- Product weight:** 288g
- Cable length:** 2.3m (plug-in transformer)
- Includes:** 8 premium guide combs (1.5 - 25mm), clean brush, blade oil, transformer, blade guard.



Part Number	Packaging unit	Case Pack
8148-016	12 pcs	6



# CORDLESS SUPER TAPER

ProLithium<sup>®</sup>  
SERIES  
lithium technology  
2x longer life\*

The cord/cordless Super Taper clipper combines the features you love from the corded super taper with the flexibility of a cordless clipper. The powerful motor means that it can cope with the demands of a busy barber shop and cut well all day.



- Type:** Professional Cordless Clipper
- Run time:** 90 min (continuous operation on mains)
- Charge time:** 120 min
- Motor:** Powerful DC Motor ~5500 rpm
- Blades:** 1006-401 Standard Taper Blade
- Cutting length:** 1 – 3.5mm
- Cutting width:** 40mm
- Product weight:** 290g
- Cable length:** 2.4m (plug-in transformer)
- Includes:** 4 guide combs (3 - 13mm), blade oil, clean brush, a transformer, blade guard & flat-top hairstyling comb



Part Number	Packaging unit	Case Pack
8591-016	8 pcs	6



# CHARGING STAND

CORDLESS HAIR CLIPPER CHARGING STAND

Introducing the Wahl Cordless Clipper Charging Stand. This is the perfect accessory to keep your clippers safe and on-charge while not in use. Display your cordless hair clippers at your work station in style with the cordless clipper charging stand. This is the ultimate accessory for a busy barber or stylist to optimise their work flow.



**Type:** Professional Clipper Charging Stand

**Includes:** Charging Stand  
Adapter for older cables

**Features**

- Charges Wahl cordless hair clippers
- 100 Year Anniversary Edition Clipper
- Cordless Senior
- Cordless Magic Clipper
- Cordless Legend
- Cordless Super Taper



SKU Number	3801-116
Barcode	043917023021
Pack Size	12



# BELLINA

ProLithium<sup>®</sup>  
SERIES  
lithium technology  
2x longer life<sup>™</sup>

**Cord-Cordless Trimmer | The Lithium-ion Wahl Bellina clipper has a DC motor which maintains speed when cutting through hair, preventing clogging and pulling . It has a fast charge time and a quick charge function. The Bellina's LCD ensures you are never caught unaware, and you can always plug in.**



- Type:** Professional Cordless Clipper
- Run time:** 90 min
- Charge time:** 60 min
- Motor:** Powerful DC Motor ~5500 rpm
- Blades:** 1854-7372 Snap-on snap-off detachable blade  
1854-7041 All-In-One Blade
- Cutting length:** 0.7 - 3mm
- Cutting width:** 46mm
- Product weight:** 314g
- Cable length:** 3.0m (plug-in transformer)
- Includes:** 6 guide combs (0.5 – 25mm), blade oil, clean brush, charging stand, blade guard



Part Number	Packaging unit	Case Pack
1870-0240	10 pcs	6



**BELLA**

*Artist*  
**SERIES**  
cordless salon  
products

The Wahl Bella Trimmer has an extended run time of 100 minutes. It has snap on/off blades for easy cleaning. This elegant trimmer is super quiet and lightweight and it is durable enough to deal with a high level of usage. The Bella also has an LED light to indicate the amount of charge.



- Type:** Professional Cordless Trimmer
- Run time:** 100 min
- Charge time:** 12 hrs
- Motor:** Powerful DC Motor ~5750 rpm
- Blades:** 1590-7000 Snap-on snap-off detachable blade  
1584-7160 Snap-on snap-off t-blade
- Cutting length:** 0.4mm
- Cutting width:** 32mm
- Product weight:** 135g
- Cable length:** 2.4m (plug-in transformer)
- Includes:** 1 adjustable guide combs, blade oil, clean brush & a recharging trimmer stand.

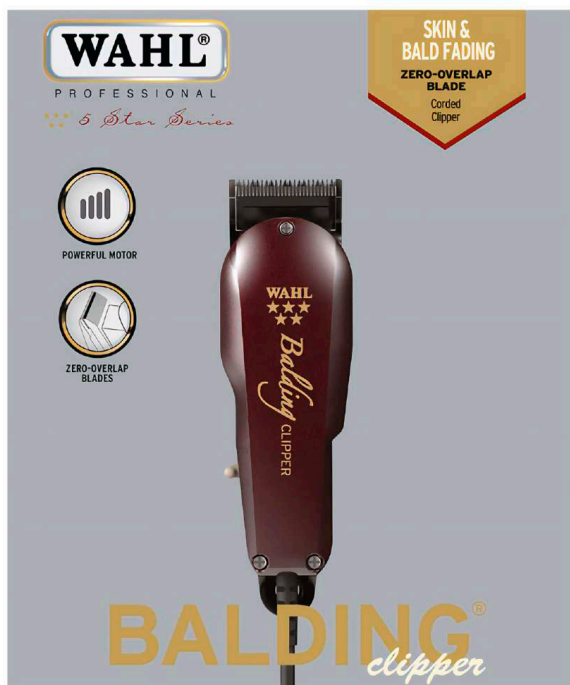
Part Number	Packaging unit	Case Pack
1590-0420	6 pcs	6



# BALDING



The 5 Star Balding Clipper ensures Barbers and Stylists give a surgically close cut, making it perfect for quick, precise, and effortless skin and bald fades. The powerful electromagnetic motor cuts at twice the speed of pivot motors. The fine tooth blade can be adjusted to zero overlap for the perfect finish.



- Type:** Professional Corded Clipper
- Motor:** V5000 Motor ~6000 rpm
- Blades:** 2105 Surgical Close Cutting Blade
- Cutting length:** 0.4mm
- Cutting width:** 40mm
- Product weight:** 460g
- Cable length:** 3.0m
- Includes:** 2 guide combs (1.5 and 4.5mm), blade oil, clean brush, blade brush & flat-top hairstyling comb, blade guard.

Part Number	Packaging unit	Case Pack
8110-016	8 pcs	6





# LEGEND



The 5 Star Legend features the innovative deep-tooth Wedge blade with an extended taper lever. This feature provides a wide range for fading and lengthens the cutting grooves. The Wedge Blade on the Legend offers improved accuracy. Don't settle for ordinary, become a LEGEND!



- Type:** Professional Corded Clipper
- Motor:** V9000 Vibrator motor ~6000 rpm
- Blades:** 2228-400 Deep-tooth Wedge fade blade
- Cutting length:** 0.5 – 2.9mm
- Cutting width:** 40mm
- Product weight:** 620g
- Cable length:** 4.0m
- Includes:** 8 premium guide combs (1.5 - 25mm), blade oil, clean brush, blade guard, barber's comb.



Part Number	Packaging unit	Case Pack
8147-016	12 pcs	6





ICON

PROFESSIONAL

Classic  
SERIES  
corded salon  
products

The most powerful clipper in the Classic series, featuring a V9000 motor which performs the same tasks as V5000 but pulls less electricity. It runs cooler meaning it can be used continuously all day without ever overheating. This makes the Icon essential for busy barber shops where 20 or more cuts are being done in a day.



- Type:** Professional Corded Clipper
- Motor:** V9000 vibrator motor ~6000 rpm
- Blades:** 1006-401 Standard Taper Blade
- Cutting length:** 1 – 3.5mm
- Cutting width:** 40mm
- Product weight:** 440g
- Cable length:** 3.0m
- Includes:** 4 premium guide combs, blade oil, clean brush, blade guard, flat-top hairstyling comb.



Part Number	Packaging unit	Case Pack
8490-016	8 pcs	6

The Wahl Super Taper is a staple in the barber industry and is recognized as one of the best taper clippers around. Equipped with a V5000 electromagnetic motor, this clipper has plenty of power to get you through a busy day in the barbershop. This versatile clipper cuts hair wet or dry, thick or thin. The Wahl Super Taper comes equipped with a blade lever for easy length adjustment.



- Type:** Professional Corded Clipper
- Motor:** V5000 vibrator motor ~6000 rpm
- Blades:** 1006-401 Standard Taper Blade
- Cutting length:** 1 – 3.5mm
- Cutting width:** 40mm
- Product weight:** 460g
- Cable length:** 3.0m
- Includes:** 4 guide combs (1.2 - 13mm), blade oil, clean brush & flat-top hairstyling comb



Part Number	Packaging unit	Case Pack
8466-025	8 pcs	6



# PRO BASIC

Classic  
SERIES  
corded salon  
products

Powerful yet comfortable, the Pro Basic clipper features a chrome-plated precision blade set and a convenient thumb lever that adjusts the taper and texture without changing blades. Powered by a V3000 vibrator motor, the Pro Basic offers durability, power and longevity.



- Type:** Professional Corded Clipper
- Motor:** V3000 Vibrator motor ~6000 rpm
- Blades:** 1006-401 Standard Taper Blade
- Cutting length:** 1 – 3.5mm
- Cutting width:** 40mm
- Product weight:** 590g
- Cable length:** 2.4m
- Includes:** 4 guide combs (1.2 - 13mm), blade oil, clean brush & flat-top hairstyling comb



Part Number	Packaging unit	Case Pack
8256-025	8 pcs	6



# Gold CORDLESS DETAILER



The T-wide blade has titanium and DLC coatings so blades stay cooler, are corrosion resistant, and are extremely strong. The adjustable T-wide blade (#2215-700) can be zero-gapped for extremely close trimming. It uses a powerful, full-sized clipper motor to cut smoothly through all hair types. It operates for 100+ minutes and features a lithium-ion battery with smart LED charging. It comes with a stylish, weighted, space-saving, charge stand.



- Type:** Professional Cordless Trimmer
- Run time:** 100 min (continuous operation on mains)
- Charge time:** 60 Minutes
- Motor:** Powerful Rotary Motor ~6800 rpm
- Blades:** 2215 T-Wide Blade
- Cutting length:** 0.4mm – Can be adjusted to zero overlap
- Cutting width:** 38mm
- Product weight:** 186g (without charging stand)
- Cable length:** 2.3m (plug-in transformer)
- Includes:** 3 premium guide combs (1.5mm, 3mm, 4.5mm), blade oil, clean brush, blade brush, blade guard, charging stand, blade alignment tool.



Part Number	Packaging unit	Case Pack
8171-716	11 pcs	6



# CORDLESS DETAILER



Introducing the 5 Star Li Cordless Detailer. The new Cord/Cordless Detailer comes equipped with an extremely close cutting T-Wide blade designed for detailing and fine line trimming, a lithium ion battery with 100-minute run time, and a heavy duty recharging stand with a unique swivel cord rotation feature.



- Type:** Professional Cordless Trimmer
- Run time:** 100 min (continuous operation on mains)
- Charge time:** 60 Minutes
- Motor:** Powerful Rotary Motor ~6800 rpm
- Blades:** 2215 T-Wide Blade
- Cutting length:** 0.4mm – Can be adjusted to zero overlap
- Cutting width:** 38mm
- Product weight:** 186g (without charging stand)
- Cable length:** 2.3m (plug-in transformer)
- Includes:** 3 premium guide combs (1.5mm, 3mm, 4.5mm), blade oil, clean brush, blade brush, blade guard, charging stand, and barber's comb.



Part Number	Packaging unit	Case Pack
8171-026	10 pcs	6



# DETAILER



The Detailer has been specifically designed for edge lining and detailing work. The extra wide T-shaped blade adjusts to zero overlap allowing you to cut closer to the skin, making this an ideal trimmer for facial hair sculpting and detailed hair tattooing.



- Type:** Professional Corded Trimmer
- Motor:** Rotary motor ~5000 rpm
- Blades:** 2215 T-Wide Blade
- Cutting length:** 0.4mm
- Cutting width:** 38mm
- Product weight:** 190g
- Cable length:** 2.9m
- Includes:** 3 premium guide combs (1.5 – 4.5mm), blade oil, clean brush & blade guard.



Part Number	Packaging unit	Case Pack
8081-216	8 pcs	6

**WAHL**  
HOME PRODUCTS

# MULTI-CUT

THE ORIGINAL BARBER KIT



Self-sharpening precision ground blades for smooth cutting



Adjust cutting lengths from 0.4 mm to 2.9 mm on the blade



Durable motor with 2x the power

**11**  
Pieces

The original barber kit for the perfect cut



2-year warranty

The Brand Used  
By Professionals



# VANISH



An innovative suspension system allows the cutting bars to move independently, hugging every neck and facial contour to make every last hair disappear. The 5 Star Vanish shaver features new independent pop-out foil bars. Save time and money in maintenance by replacing single foils instead of full shaver heads. With a 100+ run time on a single charge, the 5 Star Vanish - powered by a premium lithium-ion battery - will get most barbers through a typical day without a recharge. Nothing ruins workflow more than unknown charge level. We equipped the 5 Star Vanish with a big, brilliant, easy-read fuel gauge right on the front, so you can focus on the finish.



- Type:** Professional Cordless Shaver
- Run time:** 100 min
- Charge time:** 50 min
- Motor:** Rotary motor 9,000 rpm
- Blades:** 3022905 Reciprocating cutters with hypoallergenic gold foil
- Cutting length:** 0.05mm
- Cutting width:** 48 mm
- Product weight:** 175g
- Cable length:** 2.4m (plug-in transformer)
- Includes:** Foil guard, blade brush, clean brush, transformer

Part Number	Packaging unit	Case Pack
8173-716	5 pcs	6



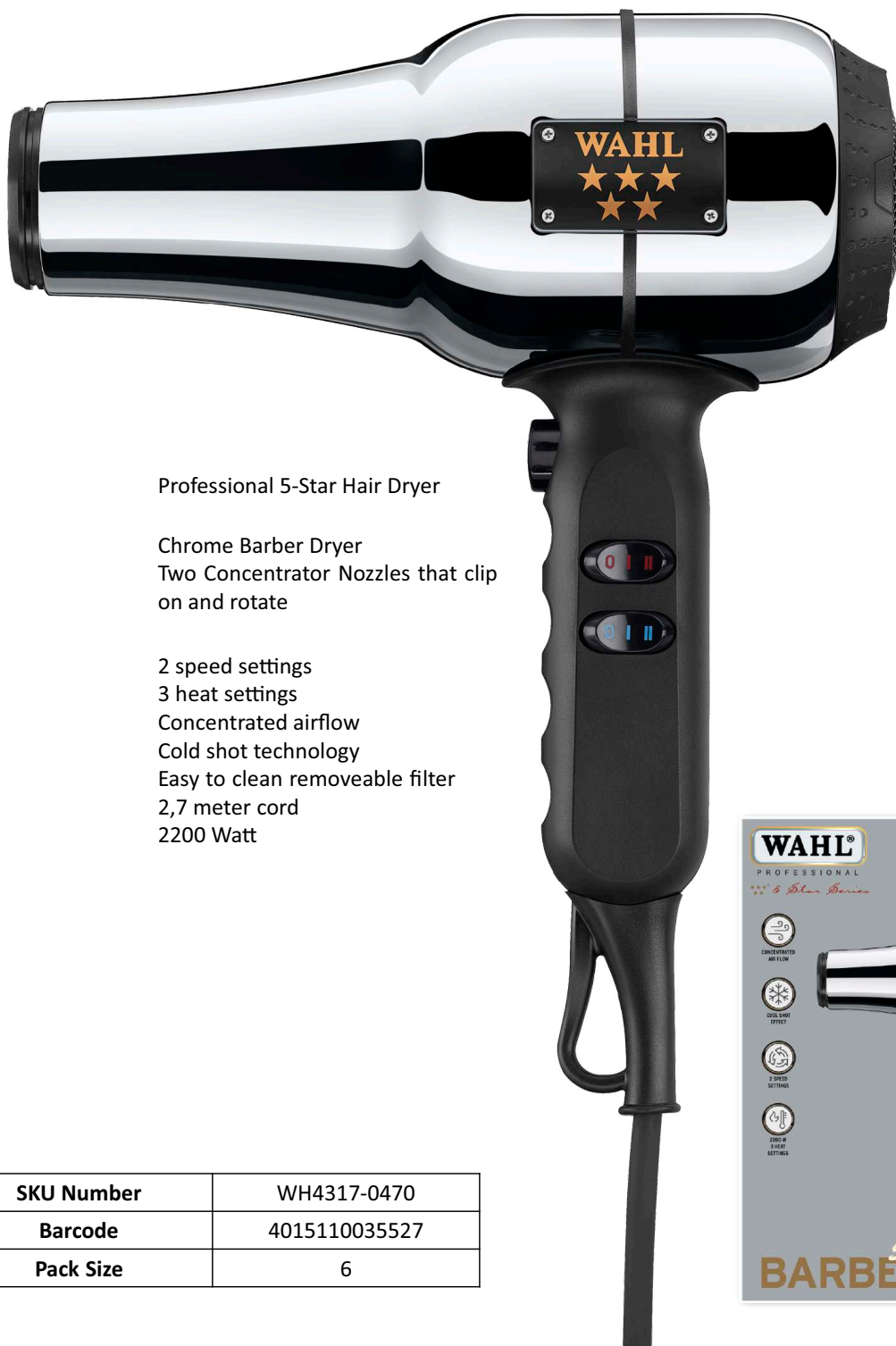


# 5-STAR BARBER DRYER

PROFESSIONAL HAIR DRYER



Create and perfect the shape of your cut with Wahl's 5 Star Pro Barber Dryer. Style and set your look with the cold shot feature, locking the cuticle in place. The Barber Dryer is intended for use on all lengths and types of hair. Optimised for quick drying; this is the perfect tool to get you through a busy day at the barbershop or salon. The unique retro-chrome look feels good in your hand and certainly makes you stand out from the crowd.



- Type:** Professional 5-Star Hair Dryer
- Includes:** Chrome Barber Dryer  
Two Concentrator Nozzles that clip on and rotate
- Features**
  - 2 speed settings
  - 3 heat settings
  - Concentrated airflow
  - Cold shot technology
  - Easy to clean removeable filter
  - 2,7 meter cord
  - 2200 Watt

SKU Number	WH4317-0470
Barcode	4015110035527
Pack Size	6





# LEFT LINE

FINGER REST PROFESSIONAL

STYLA

Experience the Wahl difference. Perfect for the left handed barber, these shears come with a finger rest for easy of control and manoeuvrability . Manufactured to the highest quality in Italy, and ice tempered to produce added hardness and keep the cutting edge sharper for longer. These shears come in a 5.5" blade length .



- Type:** Professional Shears
- Blades:** Satin Finish, Rockwell 57 Hardness, 420 Stainless Steel
- Blade Length:** 5.5"
- Includes:** Spare Grip Ring  
Spare Screw-In Finger Rest

Part Number	Packaging unit
WHS730	1



# DIAMOND ORANGE

## PROFESSIONAL SHEARS

STYLA

Experience the Wahl difference. The Diamond Orange range of professional shears are easy to use with their ergonomic design and finger rest for increased manoeuvrability. Manufactured to the highest quality in Italy, and ice tempered to produce added hardness and keep the cutting edge sharper for longer. These shears come in 6.5", 5.5", and 5" blade lengths.



- Type:** Professional Shears
- Blades:** High Polish Finish, Rockwell 57 Hardness, 420 Stainless Steel
- Blade Length:** 6.5", 5.5", 5"
- Includes:** Spare Grip Ring  
Spare Screw-In Finger Rest

Part Number	Packaging unit
WHS824	1



# THINNING

STYLA

## FINGER REST PROFESSIONAL SHEARS

Experience the Wahl difference. Less pulling with ultra-sharp professional thinning shears. The ergonomic design and finger rest makes these shears ultra-manoeuvrable and easy to use. Manufactured to the highest quality in Italy, and ice tempered to produce added hardness and keep the cutting edge sharper for longer. These shears come in a 5" blade length.



- Type:** Professional Thinning Shears
- Blades:** High Polish Finish, Rockwell 57 Hardness, 420 Stainless Steel
- Blade Length:** 5.5"
- Includes:** Spare Grip Ring  
Spare Screw-In Finger Rest

Part Number	Packaging unit
WHS818	1



# INOX LINE

STYLA

## FINGER REST PROFESSIONAL SHEARS

Experience the Wahl difference. The ultimate in style and function with this sleek set of shears. The ergonomic design and finger rest makes these shears ultra-manoeuvrable and easy to use. Manufactured to the highest quality in Italy, and ice tempered to produce added hardness and keep the cutting edge sharper for longer. These shears come in 6.5", 5.5", and 5" blade lengths.



- Type:** Professional Shears
- Blades:** Matte Black & Blue Finish, Rockwell 57, Hardness 420 Stainless Steel
- Blade Length:** 6.5", 6", 5.5"
- Includes:** Spare Grip Ring  
Spare Screw-In Finger Rest

Part Number	Packaging unit
WHS837	1



# AMADEUS LINE

## FINGER REST PROFESSIONAL SHEARS

STYLA

Experience the Wahl difference. The pearlescent cobalt finish offers the ultimate in style and function with this sleek set of shears. The ergonomic design and finger rest makes these shears ultra-manoeuvrable and easy to use. Manufactured to the highest quality in Italy, and ice tempered to produce added hardness and keep the cutting edge sharper for longer. These shears come in 5.5", and 5" blade lengths.



- Type:** Professional Shears
- Blades:** Cobalt Finish, Rockwell 57, Hardness 420 Stainless Steel
- Blade Length:** 5.5", 5"
- Includes:** Spare Grip Ring  
Spare Screw-In Finger Rest

Part Number	Packaging unit
WHS819	1



# SPEED COMBS

PROFESSIONAL SPEED HAIR COMBS

# SPEED comb

The Wahl professional speed combs are designed to cover more area and enhance your performance. The the quicker you comb, the more clients you can manage. They come in black or white, for better contrast on lighter/darker hair. Specially designed with barbs for even tension and less fall out. Eliminates cross-cutting. Clipper over comb guide included, product has a textured thumb grip for easy rotation.



Type: Professional Comb  
Includes: Speed Comb

Part Number	Packaging unit
3329-017 (Black)	6
3329-117 (White)	6